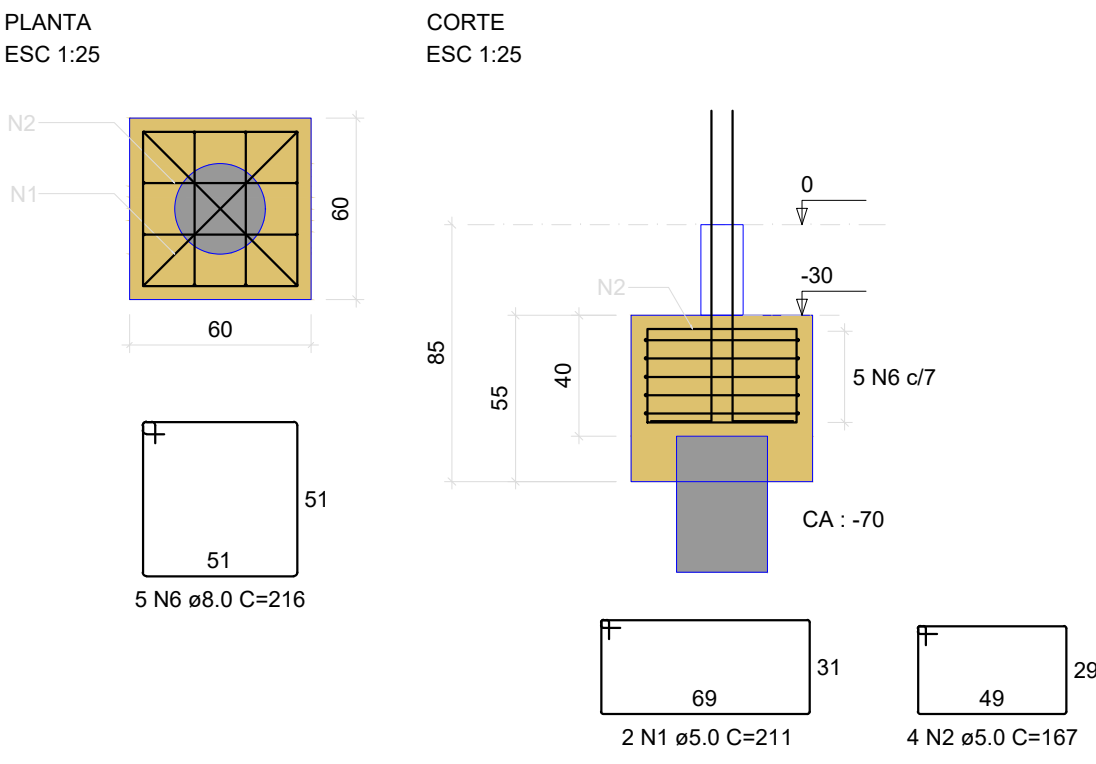
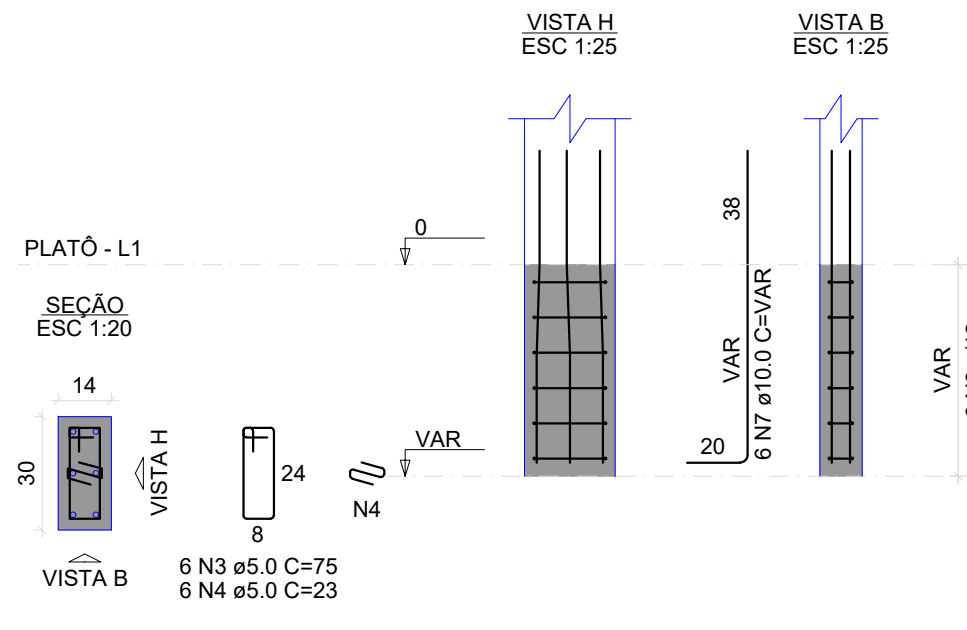


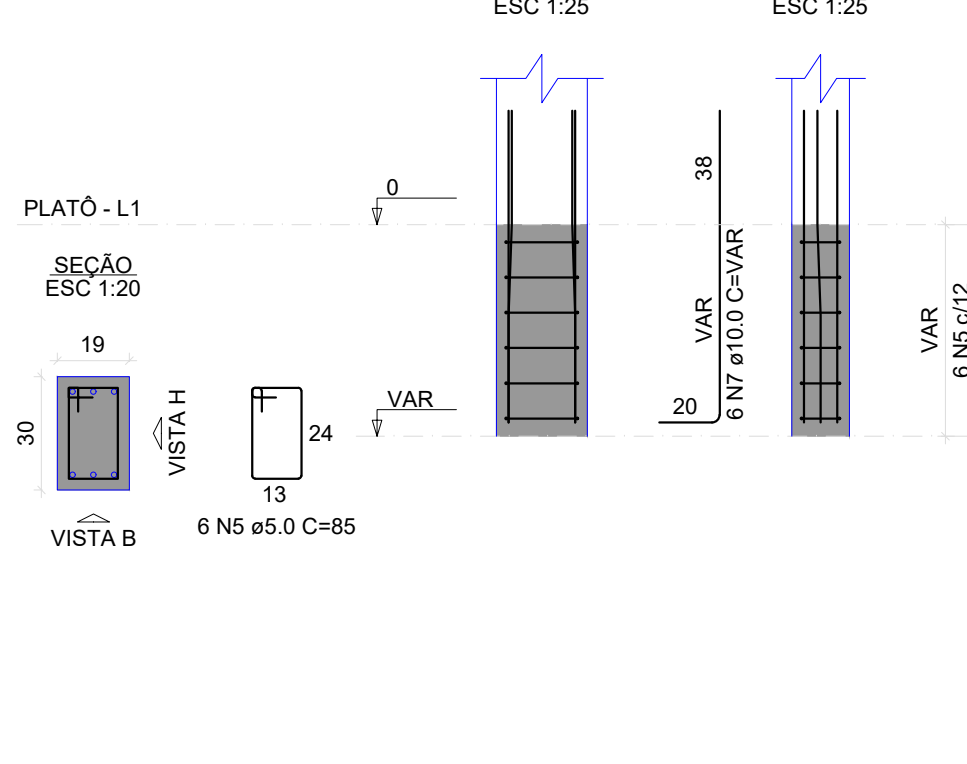
B1=B2=B3=B4=B5=B6=B7=B8=B9=B10=B11=B12
=B13=B14=B15=B16=B17=B18=B20=B21=B22
=B23=B24=B25=B26=B27=B28=B29=B36=B37
=B38=B39=B40=B41=B42=B43=B44=B45=B46
=B47=B48=B49=B50=B51=B52=B53=B54=B55
=B57=B58=B59=B60=B61=B62=B63=B64=B65
1xE30



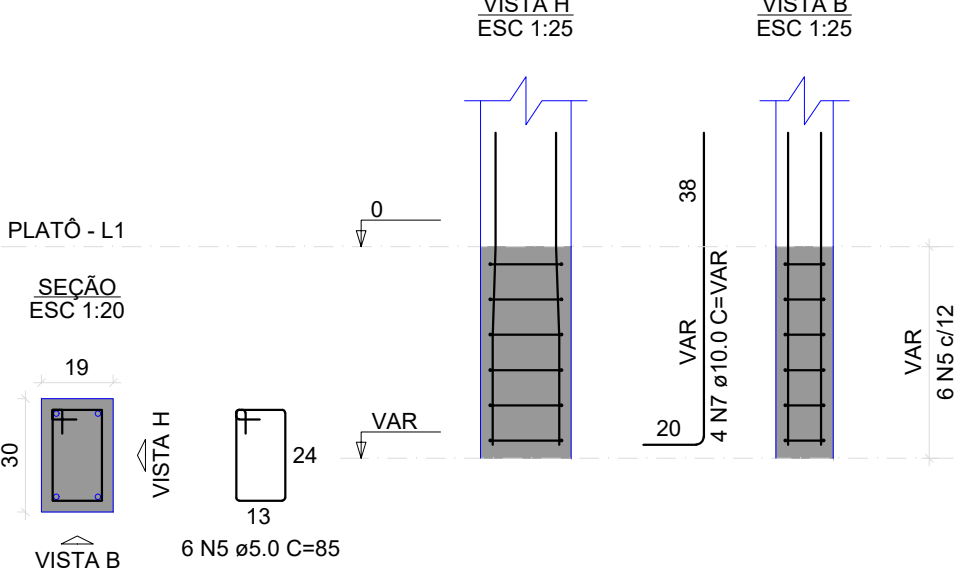
P12=P13=P14=P15=P16=P17=
=P18=P36=P49=P50=P51=P52=
=P53=P54=P55



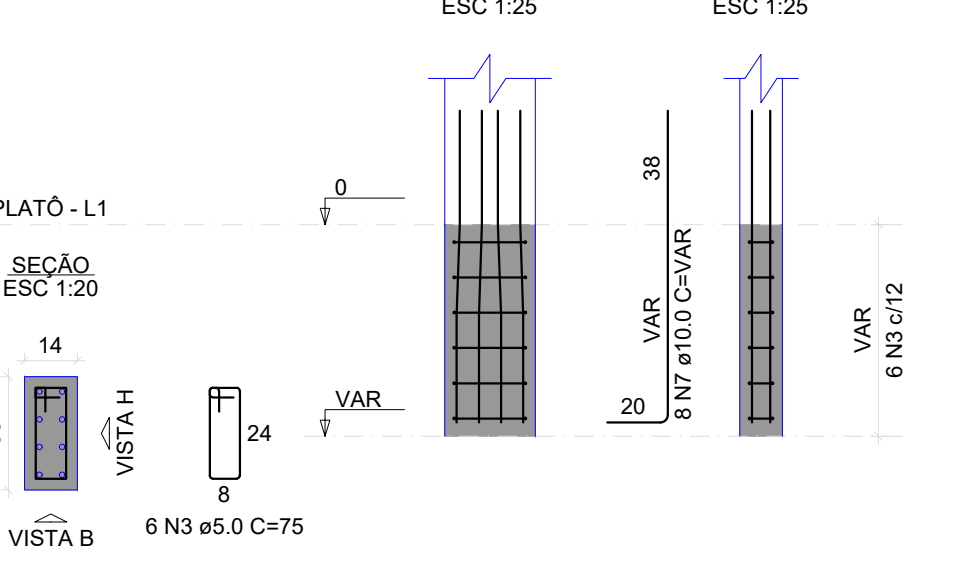
P27=P45



P20=P21=P22=P23=P24=P25=
=P26=P28=P29=P38=P39=P40=
=P41=P42=P43=P44=P46



P11=P48



RELAÇÃO DO AÇO

114xB1
30xP12

42xP1
34xP20

4xP11
4xP27

AÇO	N	DIAM (mm)	QUANT	C.UNIT (cm)	C.TOTAL (cm)
CA60	1	5.0	228	211	48108
	2	5.0	456	167	76152
	3	5.0	456	75	34200
	4	5.0	180	23	4140
CA50	5	5.0	228	85	19380
	6	8.0	570	216	123120
	7	10.0	540	VAR	VAR

RESUMO DO AÇO

AÇO	DIAM (mm)	C.TOTAL (m)	PESO + 10% (kg)
CA50	8.0	1231.2	534.4
CA60	10.0	656.8	448.8
CA60	5.0	1819.8	308.6
PESO TOTAL (kg)			
CA50	981.2		
CA60	308.6		

Volume de concreto (C-25) = 25.12 m³
Área de forma = 223.36 m²

RELAÇÃO DO AÇO

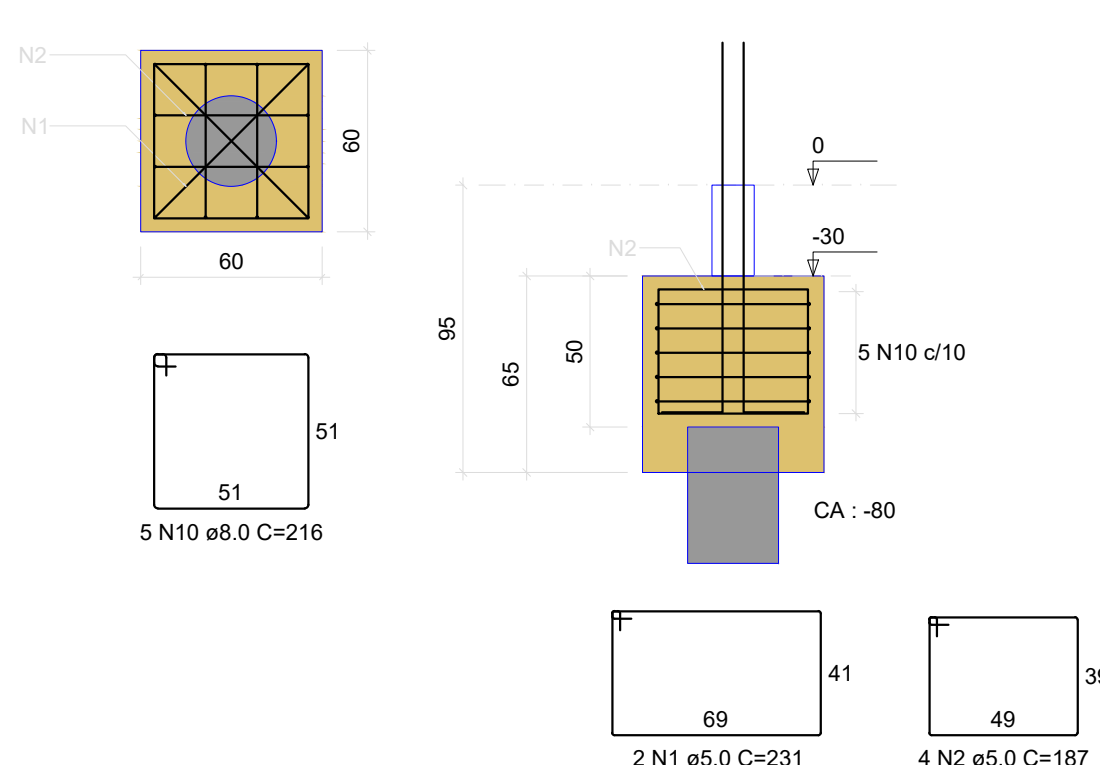
2xB30 4xP19	10xB35 2xP30	4xB56 10xP31			
AÇO	N	DIAM (mm)	QUANT	C.UNIT (cm)	C.TOTAL (cm)
CA60	1	5.0	8	231	1848
	2	5.0	16	187	2992
	3	5.0	28	23	644
	4	5.0	100	75	7500
CA50	5	5.0	24	52	1248
	6	8.0	24	195	4680
	7	8.0	48	396	19008
	8	8.0	48	153	7344
	9	8.0	84	182	15288
	10	8.0	20	216	4320
	11	10.0	50	206	10300
	12	10.0	48	VAR	VAR
	13	12.5	24	140	3360

RESUMO DO AÇO

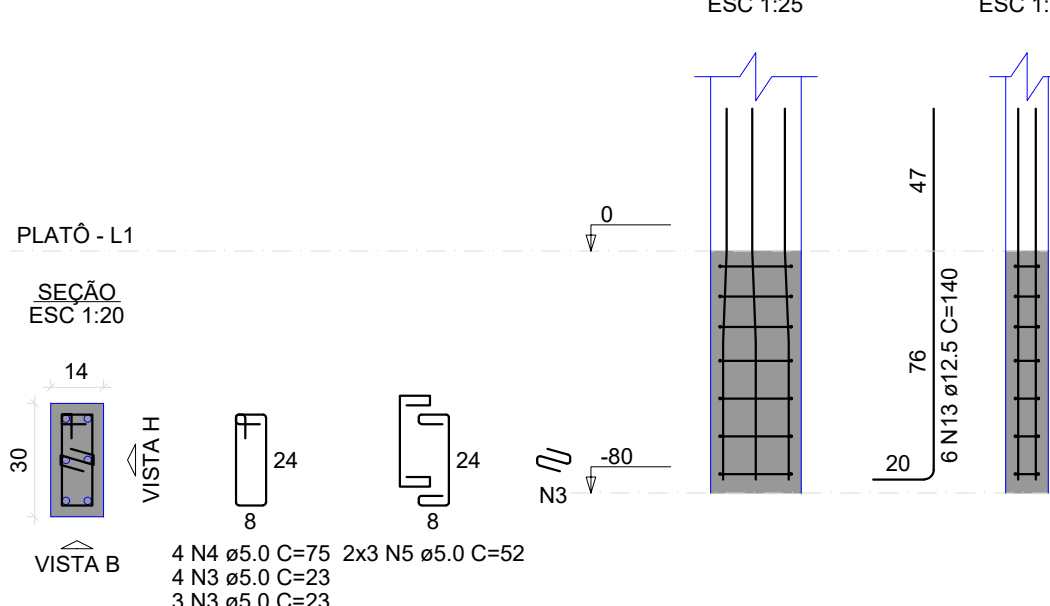
AÇO	DIAM (mm)	C.TOTAL (m)	PESO + 10% (kg)
CA50	8.0	506.4	219.8
CA50	10.0	164	111.2
CA60	5.0	142.4	35.6
CA60	12.5	24	24.2
PESO TOTAL (kg)			
CA50	366.6		
CA60	24.2		

Volume de concreto (C-25) = 7.64 m³
Área de forma = 47.22 m²

B19=B56
1xE30

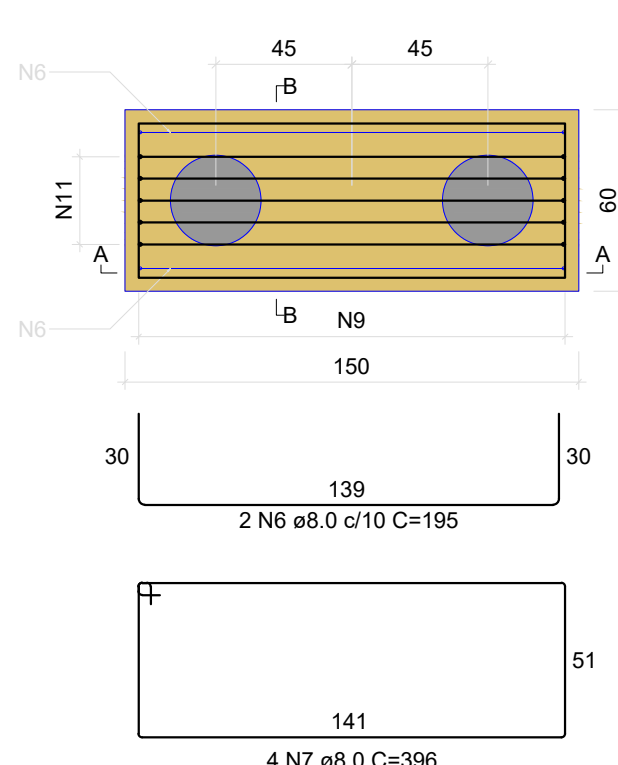


P19=P56

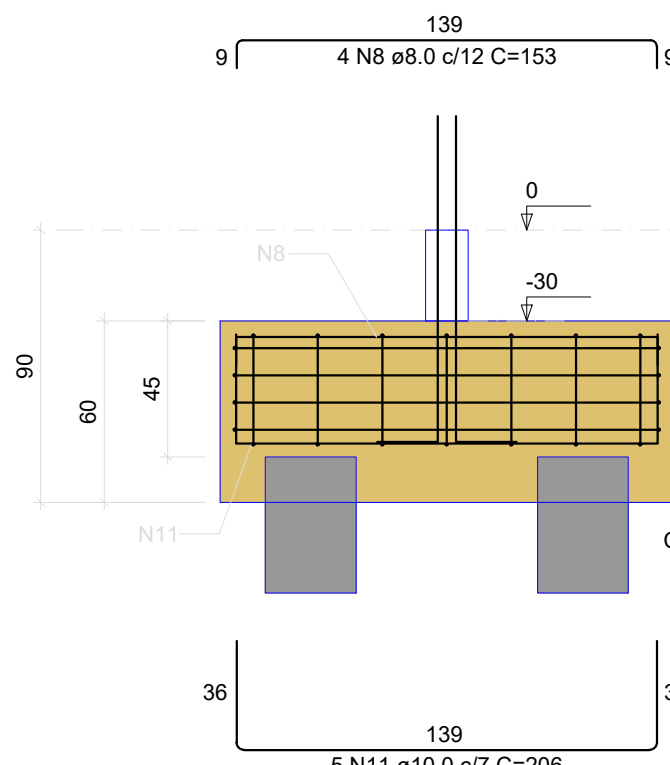


B30

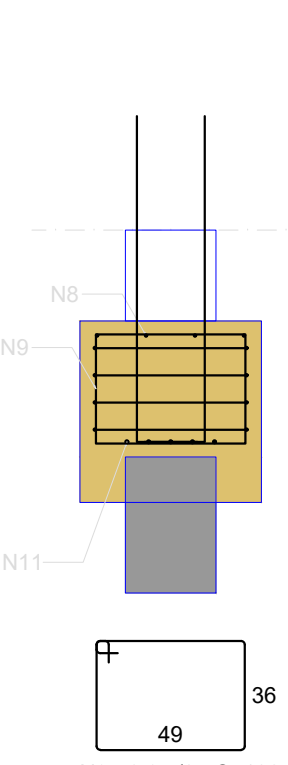
2xE30
PLANTA
ESC 1:25



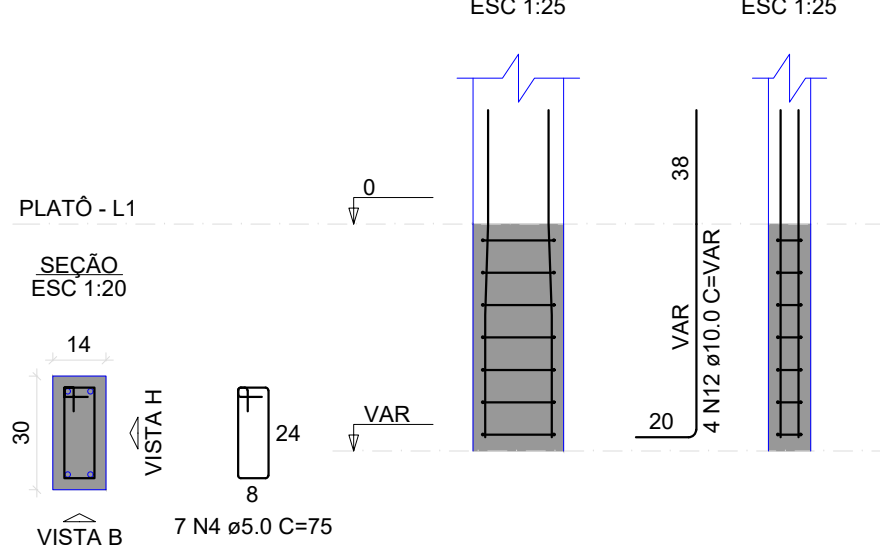
CORTE A-A
ESC 1:25



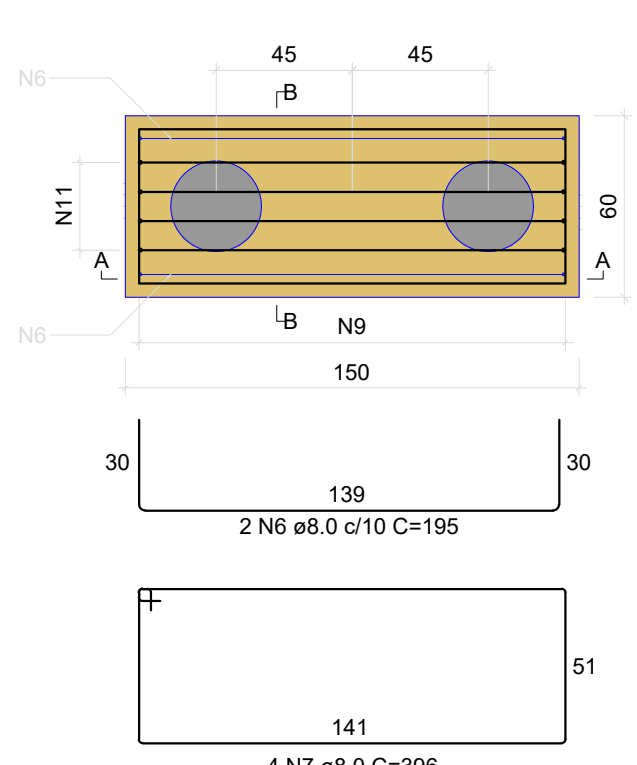
CORTE B-B
ESC 1:25



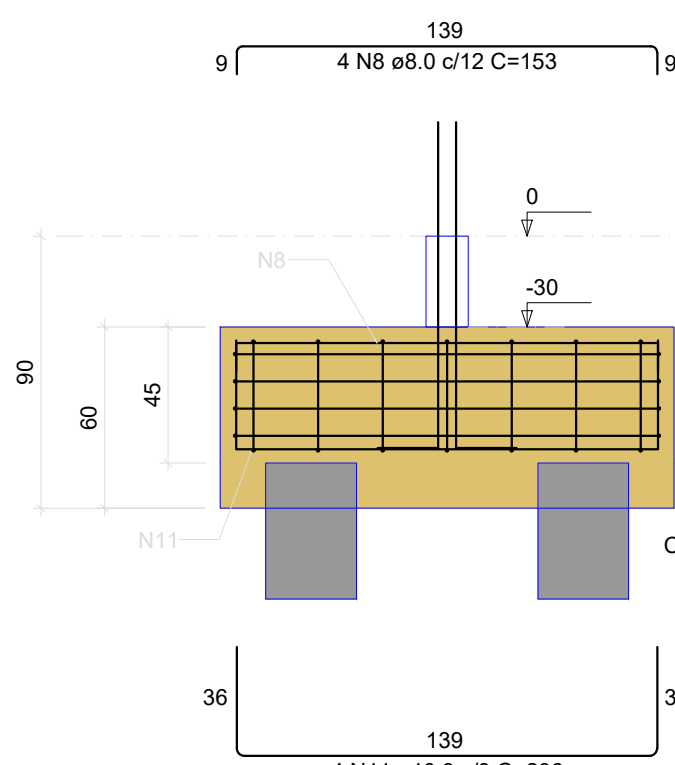
P30



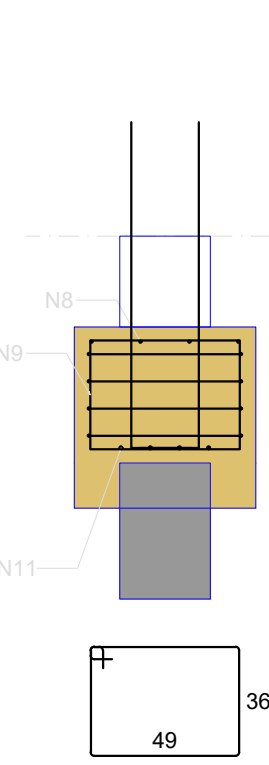
B31=B32=B33=B34=B35
2xE30
PLANTA
ESC 1:25



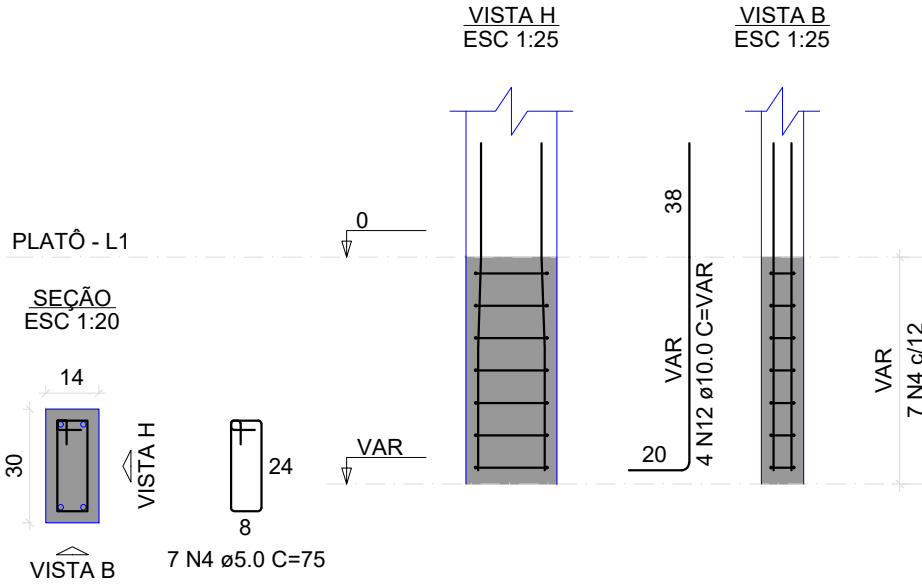
CORTE A-A
ESC 1:25



CORTE B-B
ESC 1:25



P31=P32=P33=P34=P35



CARIMBO DE APROVAÇÕES:



TIPO DE USO:

PROJETO CEASA CATALÃO

ESTRUTURAL	ENDEREÇO DA OBRA: ARCO VIÁRIO, KM 2, ZONA RURAL, CATALÃO - GO	
	PROPRIETÁRIO: PREFEITURA MUNICIPAL DE CATALÃO - GO CNPJ: 01.505.643/0001-50	
	AUTOR DO PROJETO: ENGº SAMUEL GONÇALVES CARRILHO	Nº DA PRANCHA: 07/15
	RESPONSÁVEL TÉCNICO: ENGº SAMUEL GONÇALVES CARRILHO CREA nº. 1015865852/D-GO	
	DESCRIÇÃO: * Planta de forma pav. platô - lado A * Estacas * Blocos * Pilares * Vigas	ÁREAS: Verificar planta de arquitetura.
ESCALA: INDICADAS		REVISÃO: DATA: 28/07/2022
DESENHO: SAYONARA (64)3443-1688		